

SEAT Cupra, Germany

Automotive

City:
Düsseldorf

Sales area:
670 m²

Client:
Gottfried Schultz

Lighting design:
Ansorg

Products:
Mona MIL, Coray CMT, Lightstripe LPR

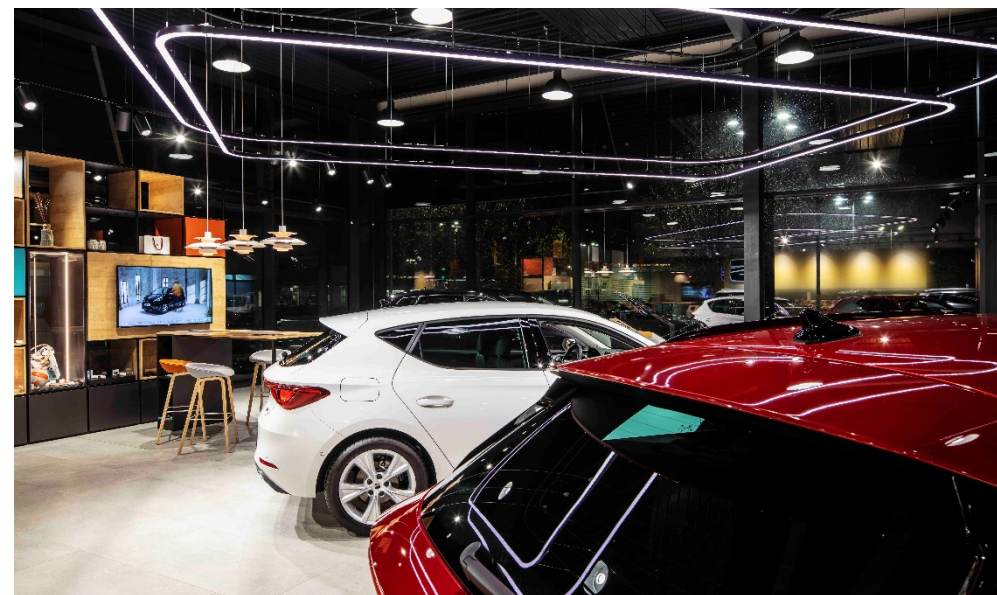
Architect:
Besnik Kalo / Studio K

Shop fitter:
Vizona

Engery consumption:
9,81 W/m²

Photographer:
Boris Golz





SEAT Cupra, Düsseldorf

SEAT Cupra, Düsseldorf

